

# School Performance Report 2017

## Strathmore Primary School

*(Your school's results are shown from page 7 onwards)*

# Differentiated School Performance Groups

The Differentiated School Performance Groups (Figure 1) complement the revised approach to school review and differentiated approach to school improvement.

Five performance groups are identified.

This methodology replaces the previous School Improvement Measures and associated School Threshold reports.

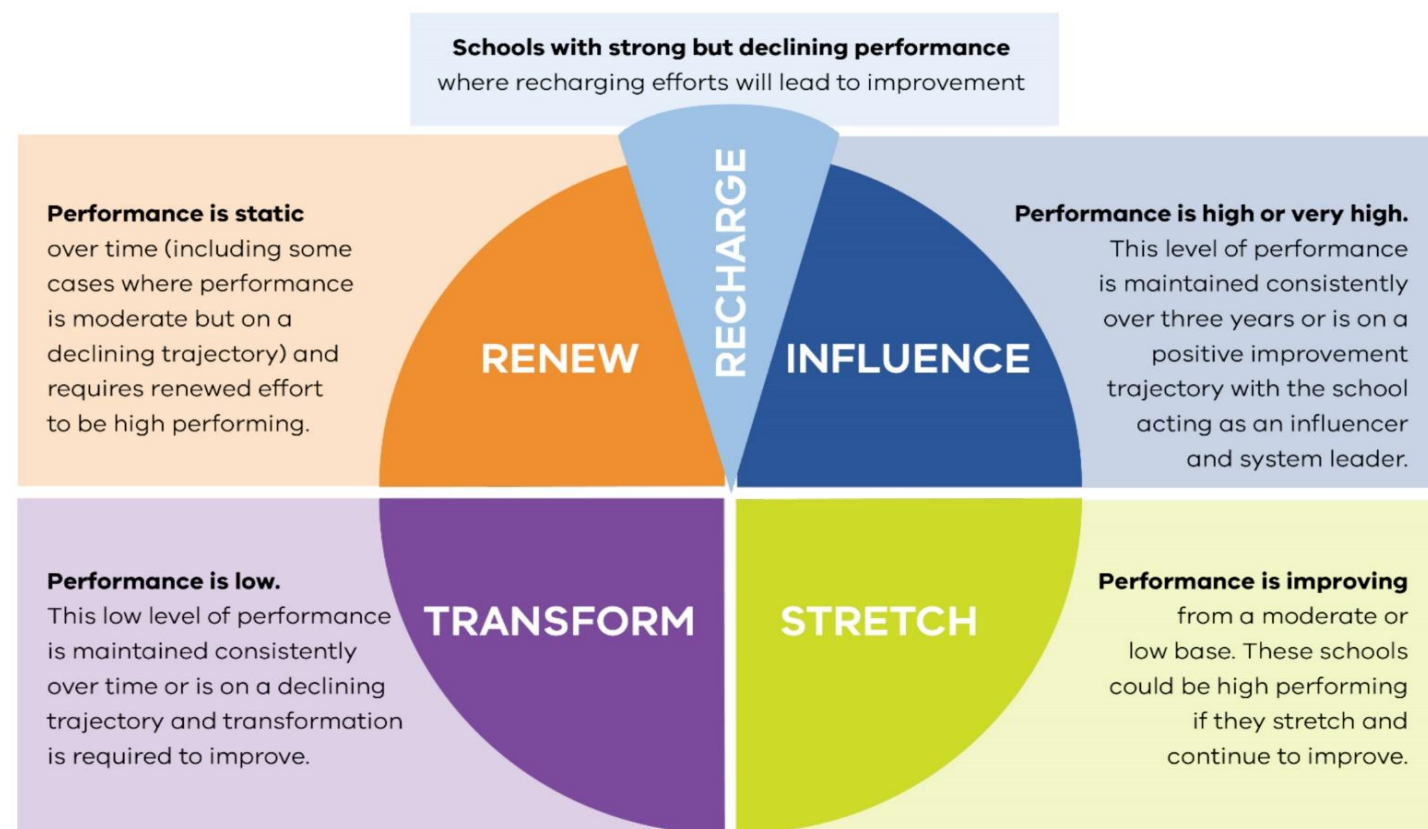


FIGURE 1: THE FIVE SCHOOL PERFORMANCE GROUPS

# Determining Your School's Performance Group

Current Level	Change Level				
	1 (Decreased Significantly)	2 (Decreased)	3 (Maintained)	4 (Increased)	5 (Increased Significantly)
	5 (Very High)				
	4 (High)				
	3 (Medium)				
	2 (Low)				
	1 (Very Low)				

FIGURE 2: SCHOOL PERFORMANCE TABLE

- To determine your school's performance group, the 'current level' and 'change level' of all schools in the state are segmented into five performance levels to create a five-by-five table (25 segments) for each measure
- Your school's placement within this table, based on your school's 'current result' and 'change result' for each applicable measure, determines the performance group to which your school belongs
- Measures are aggregated to the domain level and an overall performance group level to provide an overall summary of your school's performance

MEASURES					DOMAINS	
Achievement in top two bands of NAPLAN	+	Students in the bottom two NAPLAN bands	+	Positive change in NAPLAN results (Gain)	=	ACHIEVEMENT (Reading/Numeracy)
Collective efficacy (% of positive survey responses)	+	Academic emphasis (% of positive survey responses)	+	Instructional leadership* (% of positive survey responses)	=	SCHOOL CLIMATE
Stimulating learning (% of positive survey responses)	+	Learning confidence (% of positive survey responses)	+	Student Safety (% of positive survey responses)	=	ATTITUDES TO SCHOOL
Primary to Secondary * (% of positive transitions)		+	Attendance		=	ENGAGEMENT
Mean VCE English score		+	Senior secondary completions		=	SENIOR SECONDARY
NAPLAN participation	+	Attitudes to School (responses to ATOSS)	+	School Climate (survey responses)	=	PARTICIPATION

\* Measure based on revisions to surveys; data not yet available for all schools

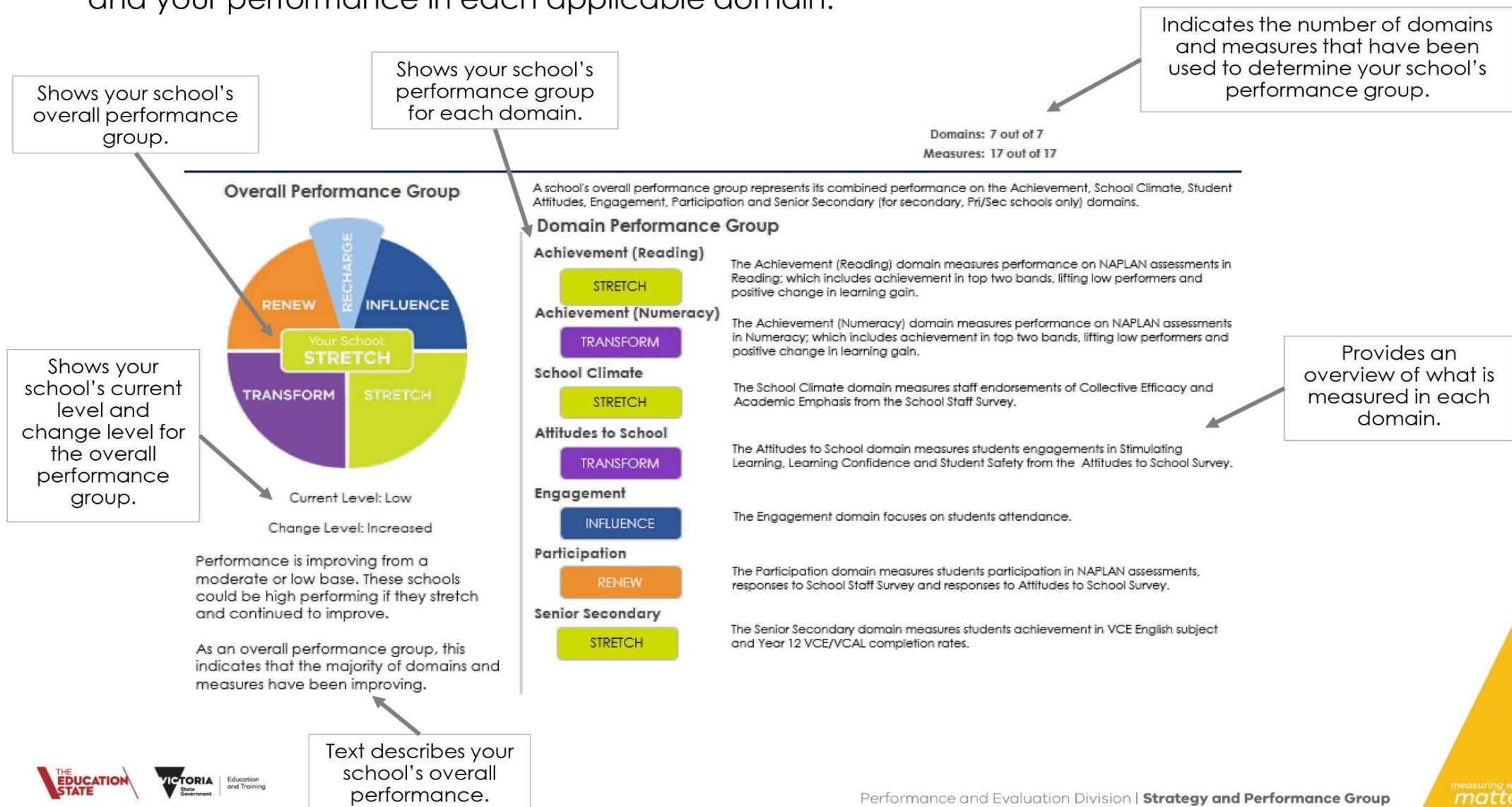
FIGURE 3: MEASURES AND DOMAINS

- The **six domains** and associated **measures** shown at left form the basis of the differentiation method.
- These have been selected based on their alignment to FISO school improvement objectives and Education State targets.



# Reading your school performance report: Summary page

The summary page provides a graphical summary of your school's overall performance group and your performance in each applicable domain.



# How to read your school performance report: Detail pages



Shows the domain.

Your school's domain performance group, current level and change level for each domain.

The measures that are used to determine your school's performance in each domain.

Your school's performance group for each measure.

Your school's most recent performance result for each measure.

The change in your school's performance over the last 3 years for each measure.

Shows your school's change level for each measure.

Shows your school's current level for each measure.

Domain	Domain Performance Group	Measure	Measure Performance Group	Current Result (Latest year)	Current Level	Change result (Last 3 years)	Change Level
Achievement (Reading)	Stretch (Medium, Increased)	% of students in Top two bands (Year 9)	Stretch	19%	Medium	1%	Increased
		% of students in Bottom two bands (Year 9)*	Stretch	21%	Medium	-3%	Decreased
		% of students with high or medium gains (Years 7 to 9)	Stretch	74%	Medium	4%	Increased
Achievement (Numeracy)	Transform (Very Low, Maintained)	% of students in Top two bands (Year 9)	Transform	10%	Low	-1%	Decreased
		% of students in Bottom two bands (Year 9)*	Transform	24%	High	2%	Increased
		% of students with high or medium gains (Years 7 to 9)	Transform	63%	Very Low	0%	Maintained
School Climate	Stretch (Medium, Increased Significantly)	% of positive endorsement in Collective Efficacy	Stretch	48%	Medium	2%	Increased
		% of positive endorsement in Academic Emphasis	Stretch	43%	Low	5%	Increased Significantly
Student Attitude	Transform (Low, Decreased)	% of student agreement in Stimulating Learning (Years 7-12)	Transform	34%	Very Low	-1%	Decreased
		% of student agreement in Learning Confidence (Years 7-12)	Transform	55%	Low	-3%	Decreased
		% of student agreement in Student Safety (Years 7-12)	Renew	75%	Low	0%	Maintained
Engagement	Influence (High, Increased Significantly)	Attendance Rate	Influence	92%	High	2%	Increased Significantly



# Your School Performance Report



# STRATHMORE PRIMARY SCHOOL (4612)

Domains: 6 out of 6  
Measures: 15 out of 15

## Overall Performance Group



Current Level: Low

Change Level: Maintained

Performance is static over time (including some cases where performance is moderate but on a declining trajectory) and requires renewed effort to be high performing.

As an overall performance group, this indicates a mix of results at the domain and measure level.

A school's overall performance group represents its combined performance on the Achievement, School Climate, Student Attitudes, Engagement, Participation and Senior Secondary (for secondary, Pri/Sec schools only) domains.

## Domain Performance Group

### Achievement (Reading)

RENEW

The Achievement (Reading) domain measures performance on NAPLAN assessments in Reading; which includes achievement in top two bands, lifting low performers and positive change in learning gain.

### Achievement (Numeracy)

TRANSFORM

The Achievement (Numeracy) domain measures performance on NAPLAN assessments in Numeracy; which includes achievement in top two bands, lifting low performers and positive change in learning gain.

### School Climate

STRETCH

The School Climate domain measures staff endorsements of Collective Efficacy and Academic Emphasis from the School Staff Survey.

### Attitudes to School

STRETCH

The Attitudes to School domain measures students engagements in Stimulating Learning, Learning Confidence and Student Safety from the Attitudes to School Survey.

### Engagement

RENEW

The Engagement domain focuses on students attendance.

### Participation

RENEW

The Participation domain measures students participation in NAPLAN assessments, responses to School Staff Survey and responses to Attitudes to School Survey.



## STRATHMORE PRIMARY SCHOOL (4612)

Domain	Domain Performance Group	Measure	Measure Performance Group	Current Result (Latest year)	Current Level	Change result (Last 3 years)	Change Level
Achievement (Reading)	Renew (Low, Maintained)	% of students in Top two bands (Year 5)	Transform	30%	Low	-3%	Decreased
		% of students in Bottom two bands (Year 5)*	Stretch	16%	Medium	-2%	Decreased
		% of students with high or medium gains (Years 3 to 5)	Renew	64%	Low	0%	Maintained
Achievement (Numeracy)	Transform (Low, Decreased)	% of students in Top two bands (Year 5)	Transform	22%	Low	-4%	Decreased
		% of students in Bottom two bands (Year 5)*	Stretch	9%	Medium	-3%	Decreased
		% of students with high or medium gains (Years 3 to 5)	Transform	64%	Low	-3%	Decreased
School Climate	Stretch (Low, Increased)	% of positive endorsement in Collective Efficacy	Stretch	73%	Low	2%	Increased
		% of positive endorsement in Academic Emphasis	Stretch	57%	Very Low	3%	Increased
Student Attitude	Stretch (Medium, Increased)	% of student agreement in Stimulating Learning (Years 5-6)	Stretch	83%	Medium	7%	Increased Significantly
		% of student agreement in Learning Confidence (Years 5-6)	Stretch	84%	Medium	3%	Increased
		% of student agreement in Student Safety (Years 5-6)	Influence	87%	High	1%	Increased
Engagement	Renew (High, Maintained)	Attendance Rate	Renew	93%	High	0%	Maintained





## STRATHMORE PRIMARY SCHOOL (4612)

Domain	Domain Performance Group	Measure	Measure Performance Group	Current Result (Latest year)	Current Level	Change result (Last 3 years)	Change Level
Participation	Renew (Medium, Maintained)	% of students participating in NAPLAN (Year 5, Reading)	Recharge	97%	High	-1%	Decreased
		% of students participating in ATOS (Years 5-6)	Transform	89%	Low	-3%	Decreased
		% of staff participating in Staff survey	Influence	89%	High	6%	Increased

*\*a low Current Result and a decrease in Change Result is desirable for this measure.*

For additional information see: [Frequently Asked Questions](#)